



### EMI/RFI filter with high attenuation for industrial and residential applications

Datasheet 3/2017

#### APPROVALS:



**FIN1351.(006 - 016).M**

#### FEATURES

- Rated current from 6 to 16A
- Very low leakage current
- DIN rail mounting

#### BENEFITS

- 5 Year warranty
- Suitable for medical applications
- Very compact design
- Protects equipment

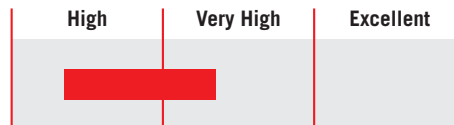
#### MARKETS

- Conveyors
- Testing equipment
- High tech machinery
- Automated machinery

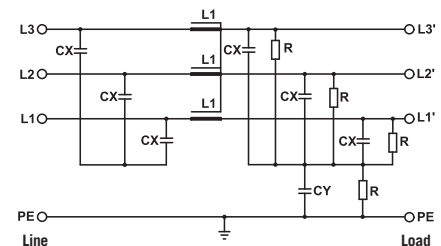
#### ORDERING CODE

FIN1351 .016 .M  
 Model Current (A) Connection  
 M = Terminal block

#### ATTENUATION INDICATOR



#### ELECTRIC DIAGRAM



#### TECHNICAL SPECIFICATIONS

Nominal voltage	0 / 480 Vac
Frequency	50 – 60 Hz
Rated current	6 to 16A
Potential test voltage phase to phase	2200 Vdc (2 sec.)
Potential test voltage phase to ground	2900 Vdc (2 sec.)
Leakage current normal conditions	< 3 mA *
Leakage current worst conditions	< 5 mA
IP Protection	IP20
Overload capability	4 x Rated current (Switch ON) 2 x In 10 seconds 1.5 In for 10 minutes
Climatic class	-40 / +85° C
MTBF at 40°C	250.000 Hrs

\* Voltage 230 Vac phase to ground 50 Hz / 40°C

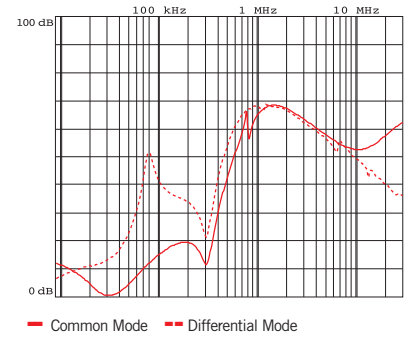
### ELECTRICAL CHARACTERISTICS

FIN1351	Rated Current 40°C	Rated Current 50°C	Power Loss (W)
.006.M	6	5	6
.010.M	10	8	8
.016.M	16	14	10

### CONNECTIONS

LINE			PE
Solid Cable (mm <sup>2</sup> )	Stranded Cable (mm <sup>2</sup> )	Terminal Block Torque (Nm)	Torque (Nm)
0.2 - 6	0.2 - 4	0.8	0.8
0.2 - 6	0.2 - 4	0.8	0.8
0.2 - 6	0.2 - 4	0.8	0.8

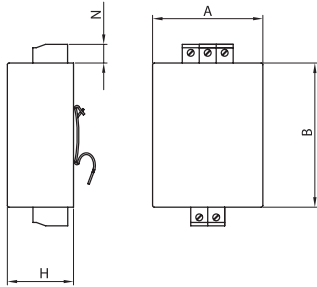
### TYPICAL ATTENUATION



### MECHANICAL DIMENSIONS mm

FIN1351	A	B	H	N	Weight Kg.	Case
.006.M	65	85	39	11	0.32	1
.010.M	65	85	39	11	0.32	1
.016.M	65	85	39	11	0.32	1

### CASE 1



### ASSEMBLY CONNECTION "M"

