



EMI/RFI Filter with high attenuation for industrial applications

Datasheet 3/2019

APPROVALS:



FIN35.(005 - 016).F

FEATURES

- Rated current from 5 to 24A
- Low leakage current
- Faston connections
- Panel mounting

BENEFITS

- 5 Year warranty
- High differential and common mode attenuation
- Compact design
- Suitable for medical applications

MARKETS

- Automated machinery
- Medical equipment
- Power supplies
- Conveyors

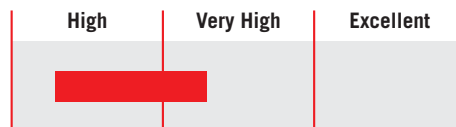
ORDERING CODE

| | | |
|-------|-------------|--------------------|
| FIN35 | .016 | .F |
| Model | Current (A) | Connection |
| | | F = Faston |
| | | M = Terminal block |

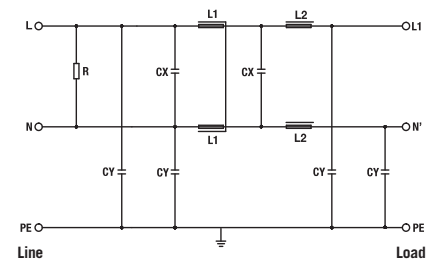


FIN35.024.M

ATTENUATION INDICATOR



ELECTRIC DIAGRAM



TECHNICAL SPECIFICATIONS

| | |
|--|---|
| Nominal voltage | 0 / 250 Vac |
| Frequency | 50 – 60 Hz |
| Rated current | 5 to 24A |
| Potential test voltage phase to phase | 1750 Vdc (2 sec.) |
| Potential test voltage phase to ground | 2150 Vdc (2 sec.) |
| Leakage current normal conditions | < 1 mA * |
| Leakage current worst conditions | < 3 mA |
| IP Protection | IPO0 up to 16A – over IP20 |
| Overload capability | 4 x Rated current (Switch ON) 2 x In 10 seconds 1.5 In for 10 minutes |
| Climatic class | -40 / +85° C |
| MTBF at 40°C | 250.000 Hrs |

* Voltage 230 Vac phase to ground 50 Hz / 40°C

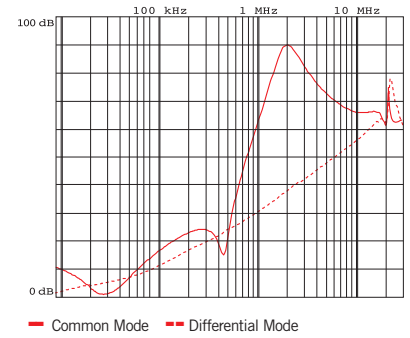
ELECTRICAL CHARACTERISTICS

| FIN35 | Rated Current 40°C | Rated Current 50°C | Power Loss (W) |
|--------|--------------------|--------------------|----------------|
| .005.F | 5 | 3 | 2 |
| .010.F | 10 | 7 | 2.7 |
| .016.F | 16 | 12 | 5 |
| .024.M | 24 | 20 | 6 |

CONNECTIONS

| Solid Cable (mm ²) | LINE | | Terminal Block Torque (Nm) | PE Torque (Nm) |
|--------------------------------|-----------------------------------|-----|----------------------------|----------------|
| | Stranded Cable (mm ²) | | | |
| 0.2 - 6 | 0.5 - 4 | - | - | - |
| 0.2 - 6 | 0.5 - 4 | - | - | - |
| 0.2 - 6 | 0.5 - 4 | - | - | - |
| 0.2 - 6 | 0.5 - 4 | 0.8 | 0.8 | 0.8 |

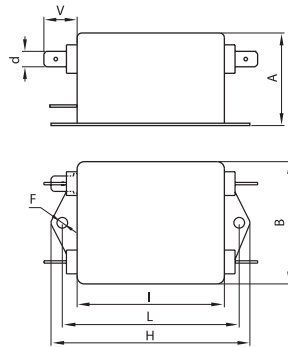
TYPICAL ATTENUATION



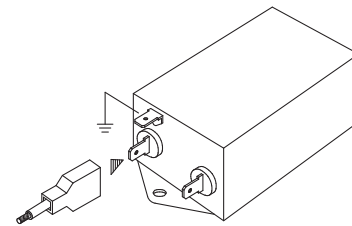
MECHANICAL DIMENSIONS mm

| FIN35 | A | B | V | F | H | I | L | N | d | Weight Kg. | Case |
|--------|------|----|------|-----|------|------|------|----|-----|------------|------|
| .005.F | 29 | 51 | 13.5 | 4.5 | 84.5 | 63.5 | 74.5 | - | 6.5 | 0.13 | 1 |
| .010.F | 33 | 51 | 13.5 | 4.5 | 84.5 | 63.5 | 74.5 | - | 6.5 | 0.18 | 2 |
| .016.F | 39.5 | 51 | 13.5 | 4.5 | 97 | 75.5 | 86.5 | - | 6.5 | 0.26 | 3 |
| .024.M | 49.5 | 51 | 13 | 4.5 | 70 | 93 | 51 | 60 | - | 0.46 | 4 |

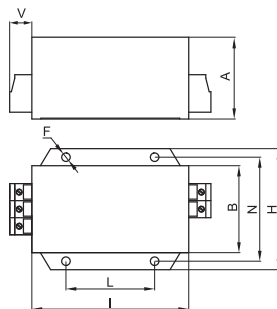
CASE 1, 2, 3



ASSEMBLY CONNECTION "F"



CASE 4



ASSEMBLY CONNECTION "M"

